

2024–2026

# implementation strategy

BASED ON FINDINGS OF THE  
2023 COMMUNITY HEALTH NEEDS ASSESSMENT

 **Iverson** MEMORIAL  
HOSPITAL

AN AFFILIATE OF UCHealth



2024–2026

# implementation strategy

BASED ON FINDINGS OF THE  
2023 COMMUNITY HEALTH NEEDS ASSESSMENT



AN AFFILIATE OF UHealth

---

at ivinson,  
**we promise** to be  
**trusted partners**  
in **world-class**  
**healthcare.**

we seek to  
be the best at  
what we do for  
our **family, friends**  
and **neighbors.**

## TABLE OF CONTENTS

<b>Introduction.....</b>	<b>6</b>
Our Commitments.....	7
Hospital Overview .....	8
Communities Served .....	8
<b>Implementation Plan .....</b>	<b>10</b>
Strategy Process, Development + Approval .....	10
Community Health Needs Summary .....	11
<b>Social And Economic Factors .....</b>	<b>12</b>
<b>Behavioral Health Services .....</b>	<b>16</b>
<b>Conclusion.....</b>	<b>21</b>

# introduction

Iverson Memorial Hospital (Iverson) is a 99-licensed-bed facility located in Laramie, Wyoming that provides access to high-quality healthcare services. At Iverson, our Community Health Needs Assessment and this Implementation Strategy will help guide our investments in community health programs and partnerships that extend Iverson's promise beyond our walls, allowing us to be trusted partners in world-class healthcare throughout Albany County. Iverson will connect with partners and organizations in the community to promote health and prevent illness with a focus on serving the community's most vulnerable populations. While our efforts will focus on providing emergency services and charity care, we also intend to develop and offer programs that promote health, prevent illness and, ultimately, address the social determinants of health. This report summarizes Iverson's planned activities to support the identified community health needs.

## our commitments

### EXCELLENCE

At Ivinson, we promise to be trusted partners in world-class healthcare. We seek to be the best at what we do for our family, friends and neighbors.

### TRUST

Great things happen when we listen to and respect our patients and our employees. We focus on building loyal, long-term relationships by holding ourselves accountable, meeting each individual's needs and earning their trust.

### HEALING

We heal our community with compassionate, inclusive care of the whole person.

### INTEGRITY

Personal integrity and honesty are the foundation of our success. We bring respect, openness and honesty to each encounter with patients, families and fellow team members.

### COMMUNITY

We strengthen our community by improving the health and wellness of our neighbors and friends. We create a culture that supports the growth and development of our people because our people are our most valuable asset.

# hospital overview

## HISTORY

Prior to the establishment of Ivinson Memorial Hospital, healthcare in Albany County was pioneered by various entities including the Union Pacific Railroad and the United States military. Even homes of physicians and nurses were sites of small medical facilities during the late 1800s and early 1900s. Ivinson Memorial Hospital was constructed in 1917.

In 1968, citizens of Laramie voted to develop a hospital district to aid in funding the construction of a new hospital building. The new building was completed in 1973 at its current location in Laramie.

Over the past 50 years, Ivinson has exponentially improved the care it provides in Albany County. Expansions to Ivinson have included construction of the Meredith and Jeannie Ray Cancer Center, as well as the addition of a medical office building for outpatient services and visiting providers. More recent expansions include:

- 30 new patient rooms, a new nine-chair dialysis unit and three state-of-the-art operating rooms.
- Updated lobby and cafeteria.
- New 64-slice CT machine, 3-D mammography machine and DaVinci surgical robot.
- New medical office with 98 exam rooms and six procedural rooms.
- New labor and delivery, gynecology, pediatrics and special-nursery unit.
- Redesigned inpatient rehabilitation.

Along with its rich history, impressive growth and enhanced capabilities, Ivinson continues to meet the community's needs and provide high quality, world-class healthcare in an efficient, effective and compassionate way.

## CURRENT SERVICES

- Behavioral Health.
- Cancer Care.
- Cardiopulmonary Care.
- Dialysis.
- Emergency Medicine.
- Intensive Care Unit.
- Laboratory and Imaging Services.
- Medical/Surgical Care.
- Nutrition Therapy.
- Endoscopy.
- Rehabilitation Facility.
- Surgery Center with Robotic Assisted Surgery.
- Women and Children Center.

Ivinson also includes Ivinson Medical Group, which provides orthopedics, pediatric and family care, primary care, general surgery, dermatology, urology, otolaryngology (ear, nose and throat, ENT) and women's health.

## communities served

For the purpose of this CHNA, the community for Ivinson is defined as Albany County, Wyoming, located in the southeast section of Wyoming and encompasses 4,274 square miles. Albany County represents the geographic area most proximal to the hospital and the area in which a large portion of Ivinson patients reside.

The data shown here characterizes the service area and also supports the importance of addressing the prioritized health needs.



**Serving, Surfing and Studying ▶**

Iverson Memorial Hospital Auxiliary Volunteer Erik Gwaltney donates his time to help assist patients in the Meredith and Jeannie Ray Cancer Center. Outside of volunteering, Erik is pursuing a graduate degree at the University of Wyoming and enjoys surfing and snowboarding in his free time.



# implementation plan

## strategy process, development + approval

**T**he implementation strategy report for Ivinson is based on the findings and health issue priorities established through the 2023 Community Health Needs Assessment (CHNA).

An implementation strategy summarizes a hospital's plans to address identified community health needs and is intended to satisfy the requirements set forth in the Patient Protection and Affordable Care Act, passed in 2010. The implementation strategy process is intended to align the hospital's resources and programs with goals, objectives and metrics for how the hospital plans to address the identified health needs in the local community.

The implementation strategy was developed by the Ivinson Senior Leadership Team (SLT) and the Community Benefit Governance Committee, a committee comprised of Board members and SLT members. The development of the implementation strategy was based on an assessment of available community resources as well as a review of Ivinson's clinical support services, community support programs and sponsorships and contributions

to community organizations that aligned with identified health needs within the community.

The activities described in this report also rely on collaboration and partnerships with many of the same organizations and stakeholders that participated in the CHNA process. The listed strategies represent the combined input from key community leaders, public health experts, local healthcare providers and Ivinson leadership. Appendix A includes a list of the organizations engaged during the CHNA and implementation strategy processes.

This report intends to describe hospital-based resources directed toward programs and services that will impact the priority health issues and are also aligned with federal community benefit guidelines for non-profit hospitals. Given the ever-changing landscape of healthcare, the initiatives in this implementation strategy may change, and new ones may be added or others eliminated based on the community needs during 2024–2026. Initiatives will be monitored for quality, performance and health impact with ongoing improvements made to facilitate success.

During the September 2023 meeting, the Ivinson Board of Directors was apprised of and approved this implementation strategy and related activities described within this report.

# community health needs summary

## IDENTIFIED COMMUNITY HEALTH NEEDS

Iverson completed its 2023 CHNA during the time frame of November 2022–April 2023. The CHNA process provided an opportunity for the hospital to engage public health experts, medical providers and community stakeholders to collectively identify the most critical health needs within the community.

## ASSESSMENT AND PRIORITIZATION PROCESS

A review of health data indicators, results from a healthcare provider survey and community input were combined to generate a list of proposed priority health needs. The comprehensive list of opportunities was presented to Iverson’s SLT and Board for consideration and was prioritized based on the following criteria:

- Scope and severity of the health need.
- Economic feasibility to address the health need.
- Potential for hospital to impact the health need.
- Alignment with Iverson’s strategies and local, state and national objectives.

## PRIORITIZED HEALTH ISSUES

The prioritized health issues identified for impact within the community served by Iverson are social and economic factors and behavioral health services.

## TABLES ADDRESSING PRIORITIZED HEALTH NEEDS

The following tables outline strategies, initiatives, anticipated impact, potential collaborations and partners, and resources that the hospitals will commit to address the prioritized health needs.

Priority Health Issue:

# social and economic factors

> **Goal:** Improve non-clinical factors related to quality of life and physical well-being.

**T**he CDC defines social determinants of health (SDOH) as the nonmedical factors that influence health outcomes. Social determinants of health are conditions within the environment where people are born, live, learn, work, play, worship and age that affect a wide range of health, functioning and quality-of-life outcomes and risks. Healthy People 2030 has included SDOH as one of its three priority areas.

According to County Health Rankings 2022 Wyoming data, the physical environment in Albany County poses challenges for its residents. Severe housing problems, homeownership and severe housing cost burden all have metrics that are higher in Albany County than in the state of Wyoming and the United States. The median household income is \$59,200 in Albany County compared to \$67,300 in Wyoming.

The childcare cost burden is similar but still slightly higher in Albany County at 27% compared to 26% in Wyoming and 25% in the U.S. Food insecurity (13%) and limited access to healthy foods (9%) are both slightly higher in Albany County than compared to the State of Wyoming and tend to impact populations who are at greater risk for social determinants of health.

The Wyoming Behavioral Risk Factor Surveillance System (BRFSS) data from 2015–2019 shows that nearly 36% of Albany County adults reported not having

a personal doctor or healthcare provider compared to 33% in Wyoming. Research shows that access to primary care is associated with positive health outcomes. Individuals with an established primary care physician are more likely to receive recommended preventive services such as flu shots, blood pressure screenings and cancer screenings. Access to care becomes an issue with social and economic factors when patients can't afford to access the care they need.

Disparities in access to primary healthcare include language-related barriers, physical disabilities, inability to take time off work to attend appointments and transportation-related barriers. Despite a favorable ratio of the population to primary and behavioral healthcare providers in Albany County, these disparities may decrease access to services and increase the risk of poor health outcomes for individuals with limited resources. Not having access to a consistent healthcare provider can reduce positive health outcomes.

Healthy People 2030 states that obesity is linked to chronic conditions including type 2 diabetes, heart disease, stroke and some types of cancer. Some racial/ethnic groups are more likely to have obesity which then increases the risk of chronic diseases. While residents of Albany County are less overweight than the State of Wyoming as a whole (55% compared to the state at 65.2%), there is a large portion of the population who are overweight or obese. Obesity rates are at 30% in Albany County and the State

of Wyoming. Lack of access combined with high obesity rates can be detrimental to the health and wellbeing of those who live in Albany County.

Food insecurity is an issue in Albany County and there are several organizations working to eliminate this problem. In collaboration with local community partners,

Ivinson has identified a gap in food security resources for those who live in Albany County but outside the city of Laramie. For resources that do travel outside Laramie, the demand is far greater than current availability. Within Laramie, federal funding rules also create a food resource gap for those under the age of 60.

## Social and Economic Factors

### Top Initiatives

Programs and initiatives	Activities	Anticipated impact	Existing or planned collaborations	Resources
Volunteer Time Off Program.	Employees are paid to volunteer at local organizations in service to the community.	Leverage Ivinson staff to help fill gaps at local nonprofits in the community.	Various community partners based on employee interest.	Staff time to support the implementation of the programs and initiatives.
Community collaborations.	Explore collaborations with Albany County partners on community initiatives related to social and economic factors.	Leverage community assets and resources for collective impact.	<ul style="list-style-type: none"> <li>• Cathedral Home.</li> <li>• Laramie Connections.</li> <li>• Meals of Hope.</li> <li>• United Way.</li> <li>• University of Wyoming (UW).</li> <li>• VOA.</li> </ul>	<p>In-kind expenses and financial support associated with the ongoing operations of the programs.</p> <p>In-kind expenses associated with collaborations with community organizations.</p>
Partnership to alleviate transportation barriers in Laramie.	Provide financial support to Public Assisted Transportation Service (PATS).	Impact key social determinant of health to improve the health of Albany County residents.	<ul style="list-style-type: none"> <li>• Public Assisted Transportation Service (PATS).</li> </ul>	
Explore new partnership to alleviate transportation barriers in Laramie.	Collaborate to provide financial support and partnership to alleviate transportation barriers in Albany County that impact food security.	Impact key social determinant of health to improve the health of Albany County residents.	<ul style="list-style-type: none"> <li>• Laramie Connections.</li> <li>• Eppson Center for Seniors.</li> </ul>	
Explore new collaboration with Meals of Hope to reduce food insecurity in the community.	Partner with Meals of Hope and potentially another community organization to provide assembly sessions for meal kits.	Increase food security by packing 5-10,000 meals.	<ul style="list-style-type: none"> <li>• Laramie Interfaith.</li> <li>• Laramie Rotary Club.</li> <li>• Meals of Hope.</li> </ul>	
Collaboration to decrease food insecurity in the community.	Purchase livestock at the Albany County 4-H Animal Sale for food distribution in the community.	Increase food security and support local 4-H organization.	<ul style="list-style-type: none"> <li>• Albany County 4-H.</li> <li>• Laramie Soup Kitchen.</li> <li>• Laramie Interfaith.</li> </ul>	

Social and Economic Factors — Top Initiatives (continued)

Programs and initiatives	Activities	Anticipated impact	Existing or planned collaborations	Resources
Collaboration with local food banks.	<p>Provide food from the Ivinson kitchen to local food banks to increase access to food.</p> <p>Iverson leadership team fills school food packs.</p> <p>Provide financial support to local food banks and organizations working to increase food security.</p>	Increase food security.	<ul style="list-style-type: none"> <li>• Albany County School District.</li> <li>• Feeding Laramie Valley.</li> <li>• Laramie Soup Kitchen.</li> <li>• Laramie Interfaith.</li> <li>• Meals of Hope.</li> </ul>	<p>Staff time to support the implementation of the programs and initiatives.</p> <p>In-kind expenses and financial support associated with the ongoing operations of the programs.</p> <p>In-kind expenses associated with collaborations with community organizations.</p>
Explore collaborations with mobile food pantries.	Explore ways to support identified gaps in access to food for Albany County residents outside of Laramie.	Increase food security.	<ul style="list-style-type: none"> <li>• Feeding Laramie Valley.</li> <li>• Laramie Soup Kitchen.</li> <li>• Laramie Interfaith.</li> <li>• Meals of Hope.</li> </ul>	
Explore collaboration to fill gap in Federal funding for organization supporting food security.	Explore ways to support identified gaps in access to food for Albany County residents under the age of 60.	Increase food security.	<ul style="list-style-type: none"> <li>• Eppson Center for Seniors meal delivery program.</li> <li>• Healthy Aging Coalition.</li> <li>• Wyoming Center on Aging.</li> </ul>	
Explore opportunities to provide cooking and nutrition education in the community, especially for those receiving food from food banks, meal delivery, etc.	Explore local resources or evidence-based programs like Cooking Matters/ Shopping Matters.	Increase knowledge of how to cook healthful foods.	<ul style="list-style-type: none"> <li>• Cent\$ible Nutrition.</li> </ul>	
Educate Albany County Middle School Students around the importance being hydrated.	Provide water bottles to Albany County Middle School Students.	Provide water bottles for middle school children and drive increased awareness of how hydration impacts learning and performance.	<ul style="list-style-type: none"> <li>• Albany County School District.</li> </ul>	

## Social and Economic Factors

Future Considerations: ideas for exploration over the continued years of the CHNA cycle.

Programs and initiatives	Activities	Anticipated impact	Existing or planned collaborations	Resources
Explore providing funding for prescription drug costs for patients at the Downtown Clinic.	Collaborate with the Downtown Clinic to cover the cost prescriptions for their patients.	Increase access to life-saving medicines, eliminating a financial barrier to care.	<ul style="list-style-type: none"> <li>• Downtown Clinic.</li> </ul>	<p>Staff time to support the implementation of the programs and initiatives.</p> <p>In-kind expenses and financial support associated with the ongoing operations of the programs.</p>
Explore additional new collaborations to reduce food insecurity in the community.	Investigate innovative food collaborations in Albany County like indoor agriculture.	Increase food security.	<ul style="list-style-type: none"> <li>• Albany County School District.</li> <li>• Downtown Clinic.</li> <li>• Plenty.</li> </ul>	<p>In-kind expenses associated with collaborations with community organizations.</p>
Explore collaborations to increase access to dental care education and tools.	Investigate a collaboration with local dentists to provide dental education, toothbrushes, tooth paste and dental floss in the schools.	Increase education and provide children with early access to tools to positively impact dental health.	<ul style="list-style-type: none"> <li>• Albany County School District.</li> <li>• Local dentists.</li> <li>• Delta Dental.</li> <li>• State-wide Oral Coalition.</li> </ul>	
Explore collaborations to increase access to dental care.	Investigate a collaboration with local dentists to encourage taking Medicaid patients to improve access to care for those with limited resources.	Increase access to dental care, improve dental health in the community.	<ul style="list-style-type: none"> <li>• Local dentists.</li> <li>• Downtown Clinic.</li> <li>• Delta Dental.</li> </ul>	
Explore collaborations to increase access to affordable day care.	Investigate providing day care scholarships.	Increase access to high quality day care.	<ul style="list-style-type: none"> <li>• Head Start.</li> <li>• Developmental Preschool and Daycare Center.</li> </ul>	

Priority Health Issue:

# behavioral health services

> **Goal:** Improve identification, treatment or resource referral for individuals with behavioral health needs.

**A**ccording to the U.S. Department of Health and Human Services, mental health disorders are among the most common causes of disability in the United States. The resulting disease burden of mental illness is among the highest of all diseases. Healthy People 2030 states that mental health and physical health are closely connected, noting that health issues like depression and anxiety can affect people's ability to take part in healthy behaviors and physical health problems can be a barrier to seeking care for mental health disorders.

In the 2022 County Health Rankings data for Wyoming, 11% of those surveyed reported frequent physical distress and 13% reported frequent mental health distress in both Albany County and the State of Wyoming. While these numbers are slightly lower than the U.S. as a whole, it bears noting that frequent physical distress impacted 4,285 Albany County residents and frequent mental distress impacted 5,064 Albany County residents in 2019, prior to the COVID-19 pandemic.

While the 2022 County Health Rankings data for Wyoming show a ratio of 170:1 for mental health providers (which would indicate good access to care compared to the state and nation), the lived experience shared by participants during the community meeting

presented a starkly different picture, noting major issues with access to behavioral health services.

## SUBSTANCE USE DISORDERS

According to the National Institutes of Health, a substance use disorder (SUD) is a condition that affects a person's brain and behavior, leading to a person's inability to control their use of substances such as legal or illegal drugs, alcohol or medications. According to Healthy People 2030, substance use disorders are linked to many health problems and can lead to overdose and death. In recent years, deaths from opioid use disorder have increased dramatically.

The Wyoming Behavioral Risk Factor Surveillance System (BRFSS) data from 2015–2019 shows that 22.9% of Wyoming men reported having 5 or more drinks on an occasion at least once in the past 30 days and women reported 4 or more drinks on an occasion in the past 30 days. Excessive drinking is also a risk factor for a variety of adverse health outcomes such as alcohol poisoning, motor vehicle crashes and suicide.

According to the BRFSS data, 12.5% of Wyoming adults in Albany County reported using marijuana in the past 30 days and 22.5% of adults in Albany County reported being told they have a depressive disorder. Both metrics are higher than the State of Wyoming.

## DEATH BY SUICIDE

When a person dies by suicide, this serious public health



problem can have long-lasting effects, not only on the individual's family, but also on the community. According to the CDC, a comprehensive public health approach to suicide prevention can decrease risk. Albany County's suicide rate, at 23 deaths per 100,000, is lower than the State of Wyoming's rate of 27 but is substantially higher than the national average of 14. According to the Centers for Disease Control and Prevention, Wyoming had the highest suicide rate in the U.S. in 2020.

The number of firearm fatalities of 16 per 100,000 in Albany County is lower than the State of Wyoming at 22 but is still above the national average of 12. The category "suicide and self-inflicted injury" is the fourth leading cause of death in Albany County according to 2021 data from the State of Wyoming. According to the State of Wyoming 2021 Suicides by Means data, firearms make up 72.0% of deaths by suicide with hanging constituting 22.2% of deaths by suicide, poisoning: 3.7% and other: 2.1%.

## Behavioral Health Services

### Top Initiatives

Programs and initiatives	Activities	Anticipated impact	Existing or planned collaborations	Resources
<p>Explore providing financial support of free counseling at Cathedral Home.</p> <p>Explore providing financial support for free family care coordination at Cathedral Home Resource Center.</p>	<p>Support free of charge counseling to the Albany County community, due to grant funding ending and high community utilization of these services.</p> <p>Support free of charge care coordination services.</p>	<p>Increase access to behavioral health services.</p>	<ul style="list-style-type: none"> <li>Albany County Commissioners.</li> <li>City of Laramie.</li> <li>Cathedral Home.</li> <li>United Way</li> </ul>	<p>Staff time to support the implementation of the programs and initiatives.</p> <p>In-kind expenses and financial support associated with the ongoing operations of the programs.</p> <p>In-kind expenses associated with collaborations with community organizations.</p>
<p>Explore ways to collaborate and support community-wide Question Persuade Refer (QPR) training or Mental Health First Aid.</p>	<p>Investigate best program to support and training opportunities at community businesses, organizations, and community groups.</p>	<p>Decrease rate of deaths by suicide.</p>	<ul style="list-style-type: none"> <li>Cathedral Home.</li> <li>Coalition to Prevent Suicide and Substance Abuse (COPSSA).</li> <li>Laramie Cares.</li> <li>United Way.</li> <li>UW A-Team.</li> <li>Volunteers of America (VOA).</li> </ul>	
<p>Explore collaboration around suicide prevention efforts for all school district employees.</p>	<p>Support school district efforts to train school district employees as it relates to suicide prevention and other ways of improving mental health for employees and students.</p>	<p>Decrease rate of deaths by suicide.</p>	<ul style="list-style-type: none"> <li>Albany County: School District and Suicide Prevention Specialist.</li> <li>Cathedral Home.</li> <li>COPSSA.</li> <li>UW A-Team.</li> <li>VOA.</li> </ul>	

Behavioral Health Services — Top Initiatives (continued)

Programs and initiatives	Activities	Anticipated impact	Existing or planned collaborations	Resources
Conduct gap analysis on current state, target state of behavioral health in collaboration with local partners.	Listen and collaborate with these groups, creating a current inventory of services and learn about emerging needs.	Contribute to community behavioral health services plan for Albany County.	<ul style="list-style-type: none"> <li>• Albany County: School District and Suicide Prevention Specialist.</li> <li>• Cathedral Home.</li> <li>• COPSSA.</li> <li>• UW A-Team.</li> <li>• UW HOPES.</li> <li>• VOA.</li> <li>• Wyoming Governor's Mental Health and Vulnerable Adult Task Force.</li> </ul>	<p>Staff time to support the implementation of the programs and initiatives.</p> <p>In-kind expenses and financial support associated with the ongoing operations of the programs.</p> <p>In-kind expenses associated with collaborations with community organizations.</p>
Crisis Intervention Team (CIT) training with law enforcement.	Partner with County Attorney's office to provide training to Albany County law enforcement.	Reduce number of behavioral health calls that result in ER admission or arrest for mental health issues.	<ul style="list-style-type: none"> <li>• Albany County: Mental Health Board, Suicide Prevention Specialist and Sheriff.</li> <li>• Laramie Police Department.</li> <li>• UW Psychology Department.</li> <li>• UW Police Department.</li> <li>• VOA.</li> </ul>	
Mental Health Crisis Response Team.	Collaborate with community partners to create a co-responder program.	Use the past three years of partner data to guide MHCRT implementation, aiming to minimize hospitalizations, ideally preventing them.	<ul style="list-style-type: none"> <li>• Albany County: Attorney, Mental Health Board and Sheriff.</li> <li>• City Council.</li> <li>• Laramie Police Department.</li> <li>• University of Wyoming (UW).</li> </ul>	
Explore collaboration opportunities with local partners to reduce opioid fatalities.	<p>Investigate collaborations to provide Naloxone (Narcan) at no cost in Albany County.</p> <p>Investigate collaborations to provide Naloxone (Narcan) administration education to the community.</p>	Decrease opioid fatalities in Albany County.	<ul style="list-style-type: none"> <li>• Albany County: Drug Court Program Director, Sheriff, County Commissioners.</li> <li>• COPSSA.</li> <li>• Laramie: Youth Crisis Center, Police Department, City Council.</li> <li>• Narcotics Anonymous.</li> <li>• Recover Wyoming.</li> </ul>	

Explore collaboration opportunities with local partners to reduce firearm fatalities.	Investigate collaboration to encourage gun locks.	Decrease firearm fatalities in Albany County.	<ul style="list-style-type: none"> <li>Albany County Sheriff.</li> <li>Laramie Police Department.</li> <li>COPSSA.</li> <li>Hi-Viz.</li> <li>UW Police Department.</li> </ul>	<p>Staff time to support the implementation of the programs and initiatives.</p> <p>In-kind expenses and financial support associated with the ongoing operations of the programs.</p>
Explore collaboration with University of Wyoming AWARE (Alcohol Wellness Alternatives, Research, & Education).	Explore providing support to the University's substance abuse prevention program.	Decrease substance abuse in Albany County.	<ul style="list-style-type: none"> <li>UW A-Team.</li> <li>UW HOPES.</li> </ul>	<p>In-kind expenses associated with collaborations with community organizations.</p>

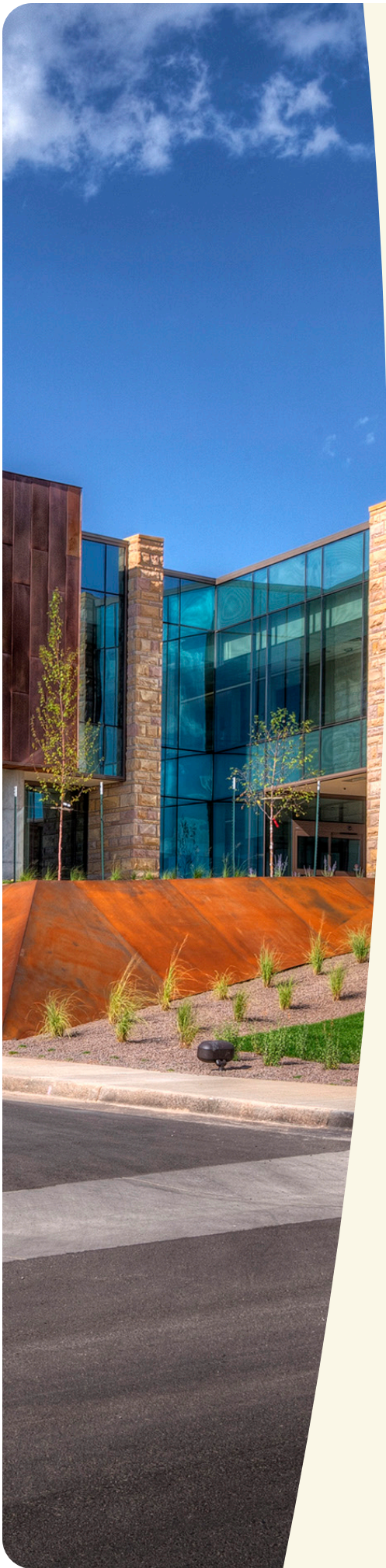
## Behavioral Health Services

Future Considerations: ideas for exploration over the continued years of the CHNA cycle.

Programs and initiatives	Activities	Anticipated impact	Existing or planned collaborations	Resources
Explore potential behavioral health services/classes in collaboration with local behavioral health specialists.	Investigate collaboration on behavioral health services/classes provided at no cost to the community. One series for people age 65+ and one series for adults age 21–65.	Increase behavioral health tools and resources in the community.	<ul style="list-style-type: none"> <li>Albany County Suicide Prevention Specialist.</li> <li>Local psychiatrists, psychologists, clinics.</li> <li>University of Wyoming (UW).</li> <li>WYCOA.</li> </ul>	<p>Staff time to support the implementation of the programs and initiatives.</p> <p>In-kind expenses and financial support associated with the ongoing operations of the programs.</p>
Explore potential collaboration to decrease prescription drug misuse.	Investigate collaboration to promote WYSAC prescription drug abuse prevention toolkit.	Increase education around prescription drug misuse.	<ul style="list-style-type: none"> <li>Healthcare Entities and Facilities in Albany County.</li> <li>Wyoming Survey &amp; Analysis Center at the University of Wyoming (WYSAC).</li> </ul>	<p>In-kind expenses associated with collaborations with community organizations.</p>
Explore potential collaboration to provide evidence-based behavioral health curriculum supplement for children in Albany County schools.	Investigate school district needs and collaborate on long-term strategies to benefit mental health issues for children in Albany County.	Increase tools available to children for positively impacting behavioral health.	<ul style="list-style-type: none"> <li>Albany County School District.</li> <li>UCHealth Healthy Hearts and Minds, Be Strong, Be Fit.</li> </ul>	

▼ **The hospital on the hill.**  
Overlooking the western plains of Laramie, Ivinson has been known to locals as, "the hospital on the hill," since moving to its current 30th Street location over 50 years ago.





# conclusion

**T**he Ivinson implementation strategy for 2024–2026 will serve as one of the numerous ways that Ivinson supports the local community.

This report summarizes our plan to impact our patients and the community we serve through a focus on the prioritized areas of need identified within the CHNA.

Ivinson will regularly identify ways to refine its implementation strategy over the next three years, including collaboration with leaders from across Ivinson and Albany County to explore policies, practices and programs that might be implemented within our community to make impactful changes to the health of the community. Ivinson will partner in the community to promote health improvement and ultimately achieve our promise to be trusted partners in world-class healthcare.





**promise**

Trusted partners in world-class healthcare.

**health elevated.**

IVINSONHOSPITAL.ORG • 255 N. 30<sup>TH</sup> ST. • LARAMIE, WY

