



IVINSON MEMORIAL HOSPITAL  
**FOUNDATION**



# ANNUAL REPORT

FISCAL YEARS 2020•2023

# 40 YEARS OF SUPPORT AND COUNTING

---

This past year, the Iverson Memorial Hospital (IMH) Foundation celebrated its 40th anniversary. Formed in August 1982 by seven community members to establish a philanthropic branch of IMH, the Foundation focuses on fundraising to improve the quality of healthcare for the residents of Albany County and its diverse population of students, community members, and those traveling across Wyoming. Over the years, the IMH Foundation has committed nearly \$20 million to Iverson Memorial Hospital, funding new equipment, capital construction projects, patient services, as well as scholarships and awards for IMH employees.

**\$20  
MILLION**

OVER 40 YRS  
SUPPORT  
TO IMH

*Mission:*

HELPING IVINSON MEMORIAL  
HOSPITAL PROVIDE THE BEST  
CARE TO OUR COMMUNITY.

# New Beginnings

Dear Friends,

I'm excited to share with you this report that provides a retrospective of the Foundation's work supporting Ivinson Memorial Hospital over the decades, showcases our recent accomplishments, and provides an overview of the Foundation's current financial strength.

Looking to the future, we present the new initiatives that will help IMH withstand the future trends and market forces affecting rural hospitals and their ability to survive the changing healthcare environment. IMH has earned the recognition of being one of the nation's top 100 community hospitals and together we can ensure IMH maintains that status.

We would like to restate our sincere thanks for your ongoing support of the many milestones we have achieved over the years. Fulfilling our mission not only helps Ivinson Memorial Hospital, but also it ensures that everyone in our community has access to quality healthcare.

Thank-you for your continued support and commitment to Ivinson Memorial Hospital and to our friends and families in Albany County and the surrounding area.

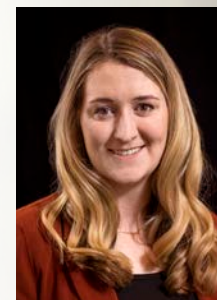


Sincerely,

*Shannon Polk*

**Shannon Polk**  
EXECUTIVE DIRECTOR

IMHF STAFF



**Shannon Plumb**  
FISCAL  
COORDINATOR



**Tina Walrath**  
DEVELOPMENT  
OPERATIONS  
COORDINATOR

# CONTENTS

## 5 **LOOKING BACK: MAJOR PROJECTS**

- 6 Meredith and Jeannie Ray Cancer Center
- 8 Dialysis Unit
- 9 Marguardt Garden
- 10 Guest House
- 12 Employee Assistance Program
- 12 The Giving Tree

## 13 **LOOKING BACK: MAJOR EVENTS**

- 14 La Grande Fleur
- 18 Groundbreaking Ceremony
- 20 Hospital Week
- 21 1973 Capsule Opening
- 22 Sportsman Raffle
- 24 Health Links Golf Tournament

## 25 **LOOKING FORWARD: NEW DIRECTIONS**

- 26 Respite Room
- 28 Emergency Services Facility Expansion + Renovation
- 30 Capital Campaign
- 32 Donor Spotlight
- 33 Strengthening Support for IMH
- 34 Golden Key Club
- 36 Board of Directors

## 38 **DISBURSEMENTS & FINANCIALS** FY23 equipment purchased, projects supported, income, and expenses

## 40 **PAST SUPPORT TO IMH** Comprehensive list of equipment purchased and projects supported dating back to 1989

## 43 **DONORS** IMHF business and individual donors, FY20 through FY23





LOOKING BACK

# MAJOR PROJECTS

FISCAL YEARS 2020•2023



## MEREDITH AND JEANNIE RAY CANCER CENTER

In 2006, Meredith and Jeannie Ray made a substantial, initial gift, helping establish the Cancer Center.

Subsequently named the Meredith and Jeannie Ray Cancer Center, IMH built a sizable facility capable of treating a variety of patients. It is unusual for a rural hospital of IMH's size to have a cancer center, with a state-of-the-art linear accelerator (LINAC), coupled with precision positional accuracy for treating a variety of tumors. IMH's latest LINAC is the third paid for by the Foundation's Ray of Hope fund. Gifts from other donors supported renovation of the infusion area, creating seven individualized spaces equipped with massaging and warming chairs in a private, comfortable environment. Other gifts have been used to develop a very comfortable waiting area for the loved ones of patients receiving care.





# 7 INDIVIDUALIZED SPACES

EQUIPPED WITH MASSAGING AND WARMING CHAIRS  
IN A PRIVATE COMFORTABLE ENVIRONMENT





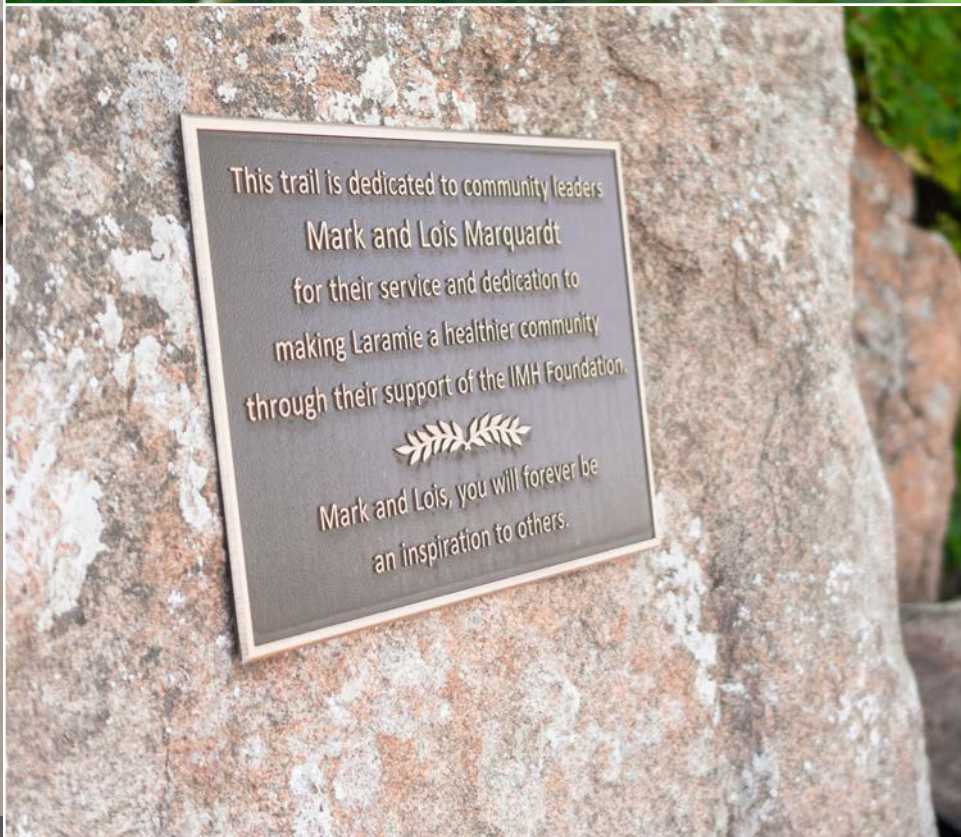


## DIALYSIS UNIT

In 1999, the Foundation purchased the first two dialysis machines which has grown to nine units supporting renal care. Board certified nephrologists oversee patient treatment delivered by a team of nurses led by a nephrology-certified nurse. But renal care is more than dialysis. Staff counsel patients on specific nutritional needs and social services support. While undergoing treatment, patients have comfortable chairs with individualized televisions, helping to make treatment time move more quickly.







## MARQUARDT GARDEN

Mark Marquardt was one of the original board members of the Foundation. He served in all executive positions, including President. He was a long-term member of the Finance Committee. Mark and Lois were also La Grand Fleur Hosts. Recognizing the importance that IMH and the Foundation played in the Marquardt's lives, their children established the Marquardt Garden in the northwest corner of the hospital grounds. With a secluded large boulder backdrop and permanent bench, the garden is an intimate place for contemplation by families and others using the hospital.



# GUEST HOUSE

It was recognized by the Foundation that a facility, near the hospital, to house the families of out-of-town patients was needed. Out of this recognition came the Guest House, a capital campaign supported project. The Guest House was built with the goal of providing exceptional care to patients, families, and friends in mind. This home allows families to truly rest and recharge so they can better tend to their loved ones and approach healthcare matters with a clear mind. The Guest House includes 24-hour a day visiting hours for patient's family and friends, and restaurant style dine-in and take-out food available daily.









# EMPLOYEE RELIEF FUND

During the pandemic, the Foundation developed a specific fund supporting IMH employees needing financial assistance with certain critical expenses due to pandemic-related job losses. \$50K was allocated and \$41,654 was spent in FY20-21 to support IMH employees. The Foundation also supports continuing education through the Employee Assistance Fund, helping employees remain current in their area of care.

## \$41,654

PROVIDED TO EMPLOYEES  
TO ASSIST WITH BILLS  
DURING THE PANDEMIC

# THE GIVING TREE

The Foundation team collected and distributed almost 400 items for IMH employees and their families this past holiday season, including gifts, clothing, and 14 food baskets. IMH employees, the Foundation board and staff members participated and assisted with the festive project.





LOOKING BACK

# MAJOR EVENTS

FISCAL YEARS 2020•2023



## LA GRANDE FLEUR

For 36 years La Grande Fleur has been the major fundraising event for IMHF. Millions of dollars have been raised through ticket sales, the associated silent auction, and various “paddle raises.”

Thirty-six couples have served as hosts. Over the years, many themes have been used, making each La Grande Fleur unique. A long social hour, “shopping” silent auction items, a great meal, and dancing are hallmarks of each evening. Over the years the success of this event has been due to many businesses and individuals purchasing tables to entertain guests and family. La Grande Fleur fundraising contributed to the Foundation’s purchase of dialysis machines; supported renovation for the Cancer Center’s entryway and patient care area; helped fund continuing education for patient-facing IMH employees; assisted in maintaining the Guest House; and many other projects. Finally, funds raised by the most recent La Grande Fleur events will provide substantial funding to the Emergency Services Facility Expansion and Renovation project.

**36**YRS

SUPPORTING  
IVINSON  
MEMORIAL  
HOSPITAL







*Thanks to the*

**36 COUPLES WHO HAVE  
SERVED AS HOSTS  
OVER THE YEARS**









# GROUNDBREAKING CEREMONY

In May, the IMH and the Foundation celebrated the groundbreaking of the Emergency Services Facility Expansion + Renovation project. The ceremony was featured on the front page of the Laramie *Boomerang* and picked up by the *Wyoming Business Report* and other online outlets.





*A special thank you*

TO THOSE BOARD MEMBERS WHO  
ATTENDED THE CEREMONY.





# HOSPITAL WEEK: FOUNDATION FRIDAY

## *New Beginnings*

In May of 2023, the Foundation distributed to employees 200+ flowers and plants—with custom-made thank-you cards to Ivinson Employees to recognize their care of our patients day in and day out. The Foundation staff delivered the plants throughout the hospital during the afternoon and night shifts.







## 1973 CAPSULE OPENING

The Foundation and IMH opened a 50-year old time capsule in March of 2023. The capsule was placed when IMH moved to its current location on 30th Street. Surrounding the capsule was evidence of how the Foundation and Hospital have worked together over the past four decades to enhance the care of patients, including the linear accelerator, surgical robot, and more.







## SPORTSMAN RAFFLE

In its 10<sup>th</sup> year, the Sportsman Raffle is a major fundraising event encouraging those who enjoy outdoor activities to participate and support the Foundation. The event brings together outdoor-loving people who participate in a meal and series of raffles. In addition to various items, such as sporting rifles and shotguns, other items like guided hunts, fishing on secluded private waters, and float trips are raffled off. Major gifts are donated as raffle items. Over the years, the Sportsman Raffle has raised well over \$1 million and is the Foundation's second largest fundraiser.

OVER  
**700**

PEOPLE IN  
ATTENDANCE  
IN 2023

OVER  
**\$1M**

RAISED OVER  
THE YEARS







# HEALTH LINKS GOLF TOURNAMENT

This 18-hole scramble tournament is fun. Teams from various businesses, families, and individuals placed into impromptu teams play a round of golf with extra games thrown in. The tournament always fills up with participating teams, who after the rounds are over, come back to the clubhouse for lunch, raffles and other prizes. It is a major fundraiser for the Foundation, having been in existence for 25 years. In the past decade, proceeds from this event have been committed to the Meredith and Jeannie Ray Cancer Center. In 2022, the Foundation celebrated its highest gross revenue for this event, with special support from key donor Bill Werner. Bill served as the event sponsor in 2022—and contributed the most in the events' history. Board Member and former IMHF President Duane Cattles has been the long-term chairperson for this event—a major commitment on his part, with substantial support by the staff.

*Thanks to*  
EVENT SPONSOR  
**BILL WERNER**



**25** YRS  
SUPPORTING IMH





The background of the slide is a teal color with a close-up photograph of green leaves on the right side. The leaves are vibrant green with visible veins. A semi-transparent teal rectangle is positioned behind the text "LOOKING FORWARD".

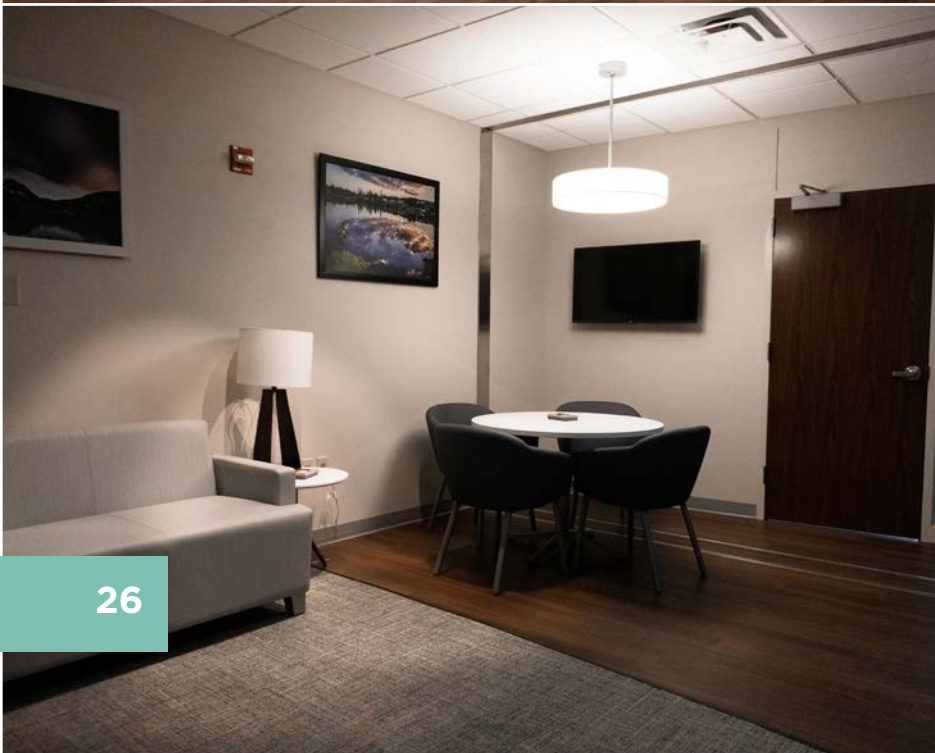
LOOKING FORWARD

# NEW DIRECTIONS



## RESPITE ROOM

Sometimes a patient, in critical condition with the end of life near, is admitted to IMH. In these cases where hospice care is not an option, the patient must continue receiving care at IMH. The Foundation helped build an extraordinarily welcoming room for loved ones supporting such patients in the hospital. The Respite Room is filled with comfortable furniture, internet connectivity, television, fireplace, and separate restroom facilities.





**FUNDING FOR THIS SPACE  
CAME FROM PROCEEDS  
RAISED DURING THE IMHF  
SPORTSMAN RAFFLE  
EVENT AND MATCH  
PROVIDED BY A MAJOR  
DONOR, OLD ELK RANCH.**



# EMERGENCY SERVICES FACILITY EXPANSION + RENOVATION

Albany County, Saratoga Valley in southern Carbon County, and Jackson County, Colorado are all supported by the Emergency Department at IMH. Whether supporting illness, accidents of all types or sudden medical emergencies, the doctors and staff provide expert care to all. Originally designed for about 8,000 visits yearly, the Emergency Services Facility now provides care to well over 12,000 annually. IMH's top priority is to renovate and expand the facility, allowing it to handle up to 15,000 visits per year. In this renovation the Emergency Services Facility will expand from about 8,000 sq ft to slightly over 13,000 sq ft. The number of service rooms will increase from eight to thirteen, four with special ventilation capable of handling highly contagious pathogens. Specific behavioral health areas will be built and improved connectivity to the ambulance bay will be completed. The waiting area will be enlarged and made more comfortable, with special space for those accompanying patients requiring critical care.







# *The Capital* **CAMPAIGN**

With our community continuing to grow, we have an urgent need to address the rising demand for emergency services. The Ivinson Memorial Hospital Foundation launched our capital campaign earlier this year in support of funding the Ivinson Emergency Services Facility Expansion and Renovation. This is the most aggressive fundraising project in the Foundation's history. Design work is completed, with an estimated total cost of \$14 million. The State of Wyoming has granted \$3.125 million to this project, recognizing its need.

The Foundation's Capital Campaign Committee, co-chaired by Gary Crum and Karen Saunders have worked tirelessly with the Foundation Executive Director, to reach out to the community for donations supporting this important project. Also, in the planning and execution of fundraising events such as the Sportsman Raffle and La Grande Fleur. A generous new donor, John Evans, has committed to match all gifts received by December 31, 2024 to the Emergency Services Facility dollar for dollar to a total of \$5 million, therefore doubling all gifts.

Beginning in June 2023, Bill Gern assumed the role as Capital Campaign co-chair as Karen Saunders stepped down after assisting with the campaign efforts for over a year.

## **LAUNCHING**

THE IMH EMERGENCY SERVICES  
FACILITY RENOVATION &  
EXPANSION PROJECT





Photo credit Carol Ryczek, Laramie Boomerang

## DONOR SPOTLIGHT:

With great appreciation we honor and thank John Evans.

John Evans moved to Laramie, Wyoming at the age of 12 and grew to love and appreciate the Laramie Valley. He graduated from Laramie High School and continued his education at the University of Wyoming studying Engineering. After two years, Mr. Evans was drafted and served in the Army Ordinance from 1968-1971, stationed in Europe. Upon completing his service, John returned to the University of Wyoming and graduated with an MBA in 1974. That same year he married Janey Hampton of Alexandria, Virginia. After traveling and living in several states pursuing career opportunities with various nuclear energy companies, John and Janey returned to Laramie in 1999 making it their home.

During his time in Laramie, Mr. Evans grew as a successful businessman while remaining actively engaged in the community. He dedicated 17 years as a member of the Rotary Club, serving on the organization's membership committee.

Sadly, in spring 2023, Janey passed. John & Janey were married for 49 years. Following her passing, and because of John's interest in giving back to his community, he connected with the Ivinson Memorial Hospital Foundation to support the Capital Campaign helping IMH's Emergency Service Facility Expansion and Renovation project in honor of his late wife Janey. John is involved in several ongoing charitable projects in the Laramie community, and we are pleased to partner with him on this very important project.



**\$5M**  
**DONOR**  
**MATCH**

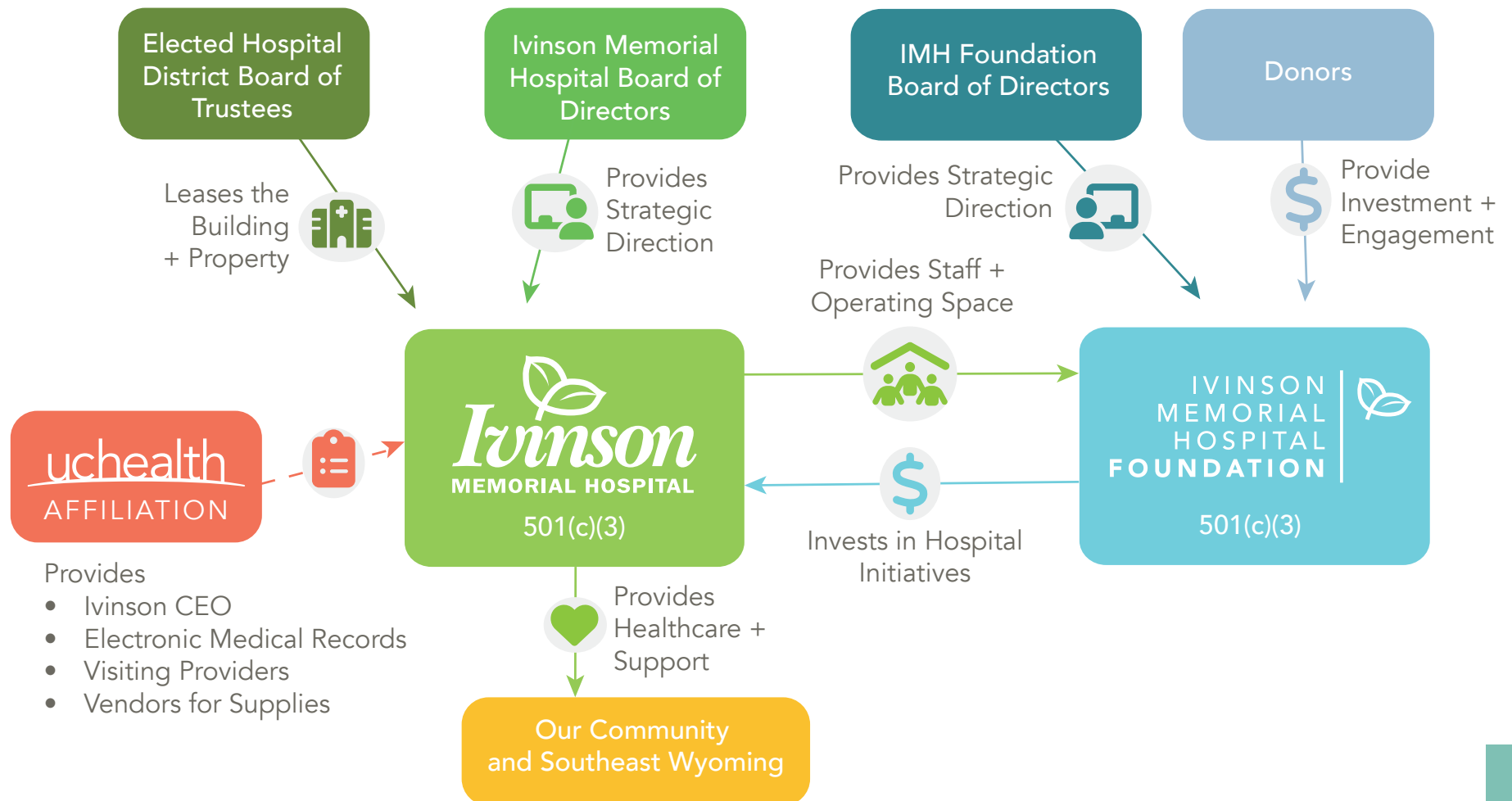
JOHN EVANS



# STRENGTHENING OUR SUPPORT OF IMH

A revised Memorandum of Understanding between IMH and IMHF was signed in 2021, reaffirming and strengthening our relationship. Our staff work closely with the IMH Executive Committee and support the hospital's mission to serve our community.

The Executive Director has also shifted to securing private donations, trust and estate gifts. Event committees and volunteers provide more support to run the Foundation's annual events.



# GOLDEN KEY CLUB

The IMH Foundation Board of Directors updated the Golden Key Club Policy in February of 2021 clarifying membership requirements and expectations, as well as simplifying tracking of eligibility. All previous individual and business members were grandfathered in. Members of the Golden Key are historically the Foundation's major donors. Due to the pandemic, Golden Key was virtual; however, in November of 2022 the Foundation once again hosted a Golden Key event inviting members and emeritus Directors to the Cavalryman Steakhouse. The meeting provided an opportunity to again thank Golden Key for their support.







**MANY  
THANKS TO  
THE GOLDEN  
KEY CLUB  
SUPPORT OF  
THE YEARS**



# BOARD OF DIRECTORS

The IMH Foundation Board of Directors is comprised of Laramie Community members who guide strategic planning, manage investments and funding distributions, and advocate for the hospital.



**BILL GERN**  
President



**KEM KRUEGER**  
Vice President



**REBECCA MILLER**  
Treasurer



**NICK HAUSER**  
Secretary



**RANDI DOWNHAM**  
Member-At-Large



**JOE STEINER**  
Historian



**KIM NEGICH**  
Past President



**DOUG FAUS**  
IMH CEO



**MEGAN GOETZ**  
Legal Counsel



Jack Bedessem



Sharleen Castle



Duane Cattles



Craig C. Cook



Gary Crum



Robbie Darnall



Jill Dodds



Nancy English



Kandi Furphy





Jim Geesey



LJ Guthman



Ken Hamilton



Walt Hammontree



David Jones



Tom Mangan



Kelly Milam



Sherri Niss



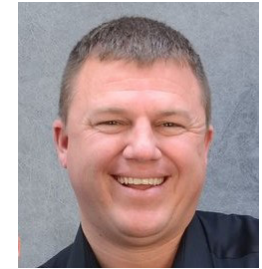
Terry Roark



Sherrie Rubio-Wallace



Randal Six



Brandon Specht



Nancy Stutzman



Eric Uhlman



Jack Ullrich



Guy Warpness



Brad Walgren



Kim Westbook

#### HONORARY MEMBERS:

Cattles, Duane  
Clark, LW Bud  
Devin, Irene  
Kohler, Kathryn  
MacMillan, Hoke  
McGraw, Trixie  
Nord, Tom  
Van Ekeren, Ron

#### EMERITUS MEMBERS:

Furphy, Dan  
Greaser, Paul  
Saunders, Karen  
Schaefer, Jay  
Shuster, Janice  
Spiegelberg, Emory

**MANY THANKS TO THOSE WHO SERVED  
ON THE BOARD OF DIRECTORS.**

*We are grateful for your service.*

Upon resignation from the IMH Foundation Board of Directors, Honorary and Emeritus status is given to Board member who have contributed a significant amount of time and/or donated at a higher giving level.

\*Note: Photos represent IMH Foundation Board of Directors as of June 30, 2023



# DISBURSEMENTS TO THE HOSPITAL

2020	Infusion rooms remodel .....	\$152,350.00	2021	Sonosite Edge II and Affintiy 4 Birthing Bed.....	\$53,660.00
2020	Lab microscopes.....	\$20,000.00	2022	Upgrades for various departments .....	\$14,013.00
2020	Novii monitor for family care .....	\$4,999.00	2022	Healing Hands fund and Guest House patient assistance for the Cancer Center .....	\$2,167.00
2020	Clamps and bins for sterile processing .....	\$4,613.00	2022	Fetal monitor.....	\$16,431.00
2020	Donor screens construction .....	\$30,488.00	2022	BHS educational materials.....	\$3,236.00
2020	Upgrades for various departments .....	\$15,361.00	2022	Spacelabs Central Station Qube Monitors .....	\$60,000.00
2020	BK stepper .....	\$13,860.00	2022	Reallocate Breast Boutique Grant Fund to IMH .....	\$5,543.00
2020	Dosimeter for Cancer Center .....	\$5,600.00	2023	Behavioral Health security cameras .....	\$11,800.00
2020	Belly Board for Cancer Center .....	\$6,500.00	2023	CAE Ares manikin .....	\$38,707.00
2020	Powershare program for radiology .....	\$10,000.00	2023	Rehabilitation Services Sara Plus device.....	\$7,967.00
2021	Rachel's Gift Infant Bereavement Program ...	\$2,000.00	2023	Telemetry monitor.....	\$15,000.00
2021	Well health communication.....	\$40,837.00	2023	Pediatric Phototherapy equipment .....	\$26,326.00
2021	Inpatient support services .....	\$39,288.00	2023	Linear accelerator—Varian Medical Systems/Oncology systems .....	\$1,000,000.00
2021	Dietary CBORD project.....	\$40,000.00	2023	Healing Hands fund and Guest House patient assistance for the Cancer Center .....	\$4,193.00
2021	Upgrades for various departments .....	\$30,823.00	2023	Rehabilitation Services Sara Plus device.....	\$8,342.00
2021	CoreU spinal surgery drill .....	\$88,573.00	2023	BHS education materials .....	\$3,269.00
2021	Linear accelerator—Varian Medical Systems/Oncology Systems.....	\$700,000.00			
2021	Healing Hands fund and Guest House patient assistance for the Cancer Center .....	\$1,410.00			



# FINANCIALS - FY23

## REVENUES

Fundraising.....	\$308,703.00
Donations.....	\$253,824.00
Grants/Other .....	\$23,300.00
<b>Total Income for FY23 .....</b>	<b>\$585,827.00</b>
Total Commitments/ Pledges to the Campaign .....	\$1,510,514.00
IMH Provided Support .....	\$315,000.00

## FOUNDATION DIRECT EXPENSES

Investment Fees.....	\$70,176.00
Event Expenses.....	\$86,227.00
Operating Costs.....	\$77,714.00
Capital Campaign Operating.....	\$17,738.00
<b>Total Operating Expenses.....</b>	<b>\$251,855.00</b>

## INVESTMENTS

Investment Dividends & Proceeds .....	\$582,743.00
Market Appreciation.....	\$1,480,360.00
<b>Total Investment Value .....</b>	<b>\$20,273,943.00</b>
Accounts Receivable.....	\$63,510.00
Fixed Assets (land and art).....	\$240,472.00
<b>Total Foundation Assets .....</b>	<b>\$21,980,618.00</b>



# PAST SUPPORT TO IMH

1989	ICU remodel.....	\$50,000.00
1992	Fetal monitoring system.....	\$50,000.00
1994	Special procedures .....	\$50,000.00
1998	Dialysis.....	\$150,000.00
1999	Stereotactic .....	\$40,000.00
2001	Ultrasound system.....	\$170,000.00
2001	Cancer Center—linear accelerator .....	\$2,335,000.00
2002	Brachytherapy .....	\$115,000.00
2003	Endoscopic equipment .....	\$168,614.00
2004	Family Care Unit—warming beds and birthing units .....	\$160,000.00
2005	Surgery tables.....	\$150,000.00
2006	Anesthesia equipment.....	\$150,000.00
2006	Space Labs cardiac telemetry .....	\$180,000.00
2006	Dialysis equipment.....	\$118,122.00
2006	Imaging equipment.....	\$250,000.00
2007	CT and MRI.....	\$250,000.00
2007	Oncology computer upgrade .....	\$23,340.00
2008	Breast Stereotactic & MR.....	\$250,000.00

2008	Cancer Center Computer upgrade .....	\$45,983.00
2008	ECF chairs .....	\$3,502.00
2009	Surgery suite upgrade .....	\$174,000.00
2010	Miscellaneous disbursements .....	\$20,608.00
2010	Waiting room upgrades .....	\$42,639.00
2011	MRI .....	\$250,000.00
2011	Waiting room upgrades .....	\$41,732.00
2011	Miscellaneous disbursements .....	\$78,226.00
2011	Colposcope for emergency room .....	\$15,645.00
2011	Bench for emergency room.....	\$2,000.00
2011	Wheelchair scale and chairs for ECF .....	\$7,230.00
2011	Cardiopulmonary chairs.....	\$2,065.00
2011	Artwork for Cancer Center .....	\$3,273.00
2011	MD's consulting area/waiting areas.....	\$3,264.00
2012	Planetree upgrades.....	\$125,000.00
2012	Guest House .....	\$1,300,000.00
2012	Dialysis exercise equipment .....	\$692.00
2012	Linear accelerator replacement .....	\$2,500,000.00
2013	Cancer Center Jeannie's Boutique.....	\$1,690.00



## PAST SUPPORT TO IMH, CON'T

2013	Miscellaneous disbursements .....	\$99,668.00	2018	Women inCourage .....	\$15,446.00
2013	Art & furniture for expansion .....	\$101,000.00	2018	Linear accelerator .....	\$250,000.00
2013	Inpatient Rehab gym & sleep lab furniture .....	\$20,000.00	2018	Walkway to medical offices at Ivinson Support .....	\$227,000.00
2014	Mobile GE x-ray .....	\$124,482.00	2018	Radiology Department/Breast Imaging Center .....	\$181,000.00
2014	Dialysis exercise equipment & chairs .....	\$7,017.00	2018	Cancer Center remodel .....	\$505,000.00
2014	Cancer Center computers, TV's & mounts .....	\$37,623.00	2019	Women inCourage funded the following: Bariatric Recliner .....	\$3,530.00
2015	Infant security system .....	\$89,000.00		CuddleCot .....	\$3,164.00
2015	ICU patient helpers .....	\$8,369.00		Essential Oil program for the Extended Care Facility .....	\$1,914.00
2015	Fetal monitor trainer & labor progress model .....	\$847.00	2019	Telestroke, initial start up year .....	\$10,000.00
2015	Admitting chairs .....	\$621.00	2019	Elastography ultrasound program .....	\$24,900.00
2015	Sandy Joy-Kris Kramschuster scholarship .....	\$72,890.00	2019	BK ultrasound machine and program .....	\$65,308.00
2016	Rehab upgrades .....	\$110,258.00	2019	Fulfilled Grateful Patient Program requests .....	\$11,436.00
2016	Atrium trees .....	\$14,013.00	2019	Breast Boutique, grant funded from the Wyoming Breast Cancer .....	\$15,000.00
2016	Children's memorial .....	\$11,190.00	2019	Scholarships awarded .....	\$16,276.00
2017	Cancer Center remodel .....	\$505,000.00	2019	Healing Hands fund, patient support for those involved with cancer treatment .....	\$1,170.80
2017	Radiology enhancements .....	\$181,000.00			
2017	Surgical robot .....	\$24,000.00			



# DONORS

3rd Street Bar and Grill  
A & J Plumbing  
A.K. Day  
Ralph Abell  
Ryan Abell  
Absolute Acrylic Spa  
AC Electric  
Ace Hardware  
ACPE Federal Credit Union  
Molly C. Adami  
Advanced Medical Imaging Consultants  
David Aguirres  
Albany County School District #1  
Doug Alexander  
Aligned Providers Wyoming  
Cameron K. Allen  
Charlie & Deanna Allen  
Linda Allgeier  
ALSCO  
Altitude Chophouse & Brewery  
Altitude Fitness  
American Postal Worker Union Clerks  
ANB Bank  
Ancient Elements Stoneworks  
Tara J. Mueller Anderson  
Claire Angele  
Antelope Meadows Mini Storage  
Jennifer C. Anton  
Teresa Arens  
Art & Soul Pottery Studio  
Gregg A. Arthur  
Asbestos and Technical Services  
Terry Aschenbrenner  
Jerry Atchley  
Gene Atencio  
David Auburn  
Chaz Avila & Josh Shenefelt  
Benjamin Ayers

Lori R. Ayers  
Bailey Bader  
Effie Bader  
Susan Ballard  
James Bands  
Lynn Barczuk  
Kelly Barnes  
Meagan M. Barnes  
Scarlett L. Barnes  
Vincent & Cheryl Bath  
Hunter A. Baumgartner  
Matt Baumgartner  
BCER Engineering  
BDO  
Caitlin M. Beck  
Nancy Beck  
Robert D. Beck  
Arthur Becker  
Bradley W. Becker  
Jack & Marjorie Bedessem  
Brett A. Befus  
Walt Beliaj  
Butch Beman  
David T. Bennett  
Lysbeth B. Bennett  
Fawn Benson  
Joe Benson  
Lynn Benson  
Rhonda Berger  
Thomas Berkeygheiser  
Thomas Berner  
Marsha Berridge  
Alaina Besneatte  
Jeremy Bey  
BH Contracting Services, LLC  
Big Dipper Ice Cream Shop  
Big Hollow Food Co-Op  
Bighorn Metalworks Inc.

Bill Biles, III  
Kevin Bird  
Demetra Bitzes  
Don Black  
Black Hills Energy  
Kathryn Blaney  
Linda Blinde  
Blooming Lemon  
Blue Cross Blue Shield  
Abe Bobbitt  
Lawrence A. Bobbitt  
Erin Bodine  
Eric Boley  
Jay & Mallory Bond  
Bond's Brewing Co.  
Robert & Eleanor Bonnes  
Daniel Boodicker  
Lawrence Boram  
Justin Boschee  
Mike & Dee Bott  
Karen Bowyer  
Donald W. Boyd  
Ken & Bonnie Braisted  
Brenda Branscom  
Suzanne Brawley  
Darren Bressler  
Nancy A. Brewster  
Monica A. Bribiesca  
Dan & Julie Bromley  
Thelma Bromley  
Kristine M. Brosmire  
Don J. Brosz  
Dianne Brown  
Ryan Brown  
Robert Brownell  
Gary Browning  
Brush Creek Ranch  
Carole Buckalew

James Bullock  
Candace M. Burch  
Bryan Van Buren  
David Burman  
Mary Burman  
Tom Burman  
Allen & Marianne Businga  
Roger Butcher  
Billie Bymers  
Louise S. Caldera  
Kimberly Cameron  
Stephen Cameron  
Donald Campbell  
Douglas Campbell  
Robert Campbell  
Angelita Candelaria  
Lois L. Cannell  
Brenda Cannon  
Nancy Carder  
Marten Carlson  
Andrew Carollo  
Herbert Carpenter  
Keith Carron  
Stephanie Carter  
Bill & Sharleen Castle  
Cathedral Home for Children  
Duane Cattles  
Linda Cavalli  
Tracey Cavsey  
Certified Inspection Services  
Rick Chadek & Kate Feeley  
Chalk 'N Cheese  
Barbara Chatton  
Cameron R. Chavez  
Jacob Chavez  
Cheyenne Frontier Days  
Karl Christensen  
Jim Clay



# DONORS, CON'T

Climate Control Company  
Emily L. Clinton  
Richard Closson  
Harold & Frances Colby  
William E. Coleman  
Howard Colling  
Carissa Collins  
Pamela S. Collins  
Comer Family  
Leslie Comly  
Lauri Conley  
Jonna Connett  
Adelaide Cook  
Craig Cook  
Margaret & Dennis Cook  
Cook and Associates, P.C.  
Kelly Cooksey  
Corona Village  
Gregory Courson  
Cowboy Glass  
Cowboy Locating, LLC  
Emma Cowdery  
Sue Cowdin  
CPA Group of Laramie  
Nicole Crawford  
Dr. Chris Cribari  
Scott Crist  
CrossFit 7220  
Gary & Lois Crum  
CSNY, Inc.  
Michael Cunningham  
Curiosity Shoppe  
Sherry A. Curran  
Patti Curry  
Robyn Curtis-Rice & Jerry Rice  
David Cutbirth  
CVS Consulting  
Les & Robbie Darnall

Charlotte & Maron Davis  
Nettie Davis  
Debra Dawson  
Zachery Deberard  
Denise Deem  
Delta Dental of Wyoming  
James Derrisaw  
Jerry P. Devin  
Edward Diaz  
Jeff Dietzel  
Digital Blues, Inc.  
Nathan Dirisio  
Jenna Dixon  
Lonny Dobler  
Eric Dodd  
Jeff & Jill Dodds  
Dodds Shoe Co.  
Charles W. Dolan  
Domino Construction  
Alea K. Doolittle  
Tom Doser  
Donovan Downey  
Keith B. Downey  
Patrick & Colleen Downey  
Tim & Randi Downham  
Tom Downham  
Elyssa E. Dreher  
DT Services  
Duane Toro Real Estate  
Pam & Sam Dunnuck  
Rudy Duran  
Karen Eaton  
Jeff Eckert  
Allen Edwards  
Gary Egge  
Sandra Eike  
Rachel R. Ellis  
Josh Elsass

Nancy English & Brad Waldbauer  
Marilyn Engstrom  
Kara Enyert  
Reba Epler  
Leif Erickson  
Paula Eskam  
Dale Eslinger  
John Etchepare  
Daniel Van Etten  
Salvatore Fallace  
Lewis Fallon  
Family Physicians of Laramie  
Sameera Fareed  
Sheralyn Farnham  
Kacie Fauchaux  
Doug & Lisa Faus  
Todd Feezer  
Jake & Sarah Felton  
Patrick Ferguson  
FIB System Foundation/Billings  
Fidelity Charitable  
Sharon K. Fields  
Nancy Fillion  
Megan B. Finkle  
Megan & Sam Finkle  
Lynn Finney  
First Interstate Bank System  
Foundation/Billings  
First Interstate Bank  
First Interstate Bank Wealth Management  
Rebecca Fisher  
Alan Fisser  
William Fitzgerald  
Shawn Fletcher  
W. Dean Flock  
Killian Florist  
Chris Floy  
FNBO

Deby & Todd Forry  
Matthew Fox  
Sheri Franken  
Chris Fraser  
Burt Freese  
Fremont Electric  
Megan Friderich  
Sheryn & Ted Fritz  
Sheila L. Fritzen  
Keith Froelich  
Frontier Cycles (HRD Enterprises)  
Hayden Fuchs  
Dan & Kandi Furphy  
Tom Gabriel  
Ted Gallegos  
Dr. Tyler & Bailey Gallo  
Sal L. Galvan Gonzales  
Rex E. Gantenbein  
Mereya Garate  
Aaron Garcia  
Jeremy Gard  
Pedro Gardea  
Tammy Gardea  
Peter & Victoire Gardner  
Carolyn Garrison  
Michael K. Garver  
Jim Geesey  
Gem City Veterinary Services  
Bill & Sharon Gern  
GH Phipps Construction of Wyoming  
Roberta Giffin  
Eric Gillies  
Megan Goetz  
Robert Gonzales  
Shawna N. Goodman  
Joan Graham  
Grand Ave Urgent Care  
Grand Avenue Dental Center



# DONORS, CON'T

Janet Gray  
 Kerry & Jane Greaser  
 Paul & Jane Greaser  
 Denise & Martin Greller  
 Gail Griffin  
 Groathouse Construction  
 Jerry Gruber  
 William C. Guenther  
 LJ & Chuck Guthmann  
 Ted Guzman  
 Brittany Hackney  
 Bryanna Hackney  
 Terry Hahn  
 John & Laura Halewski  
 Cavin Hall  
 Douglas A. Hall  
 Kerry Hall  
 Michele Hall  
 Steve Hallam  
 Stig Hallingbye  
 Danielle Halsey  
 Glenn Halsey  
 Lucas Halverson  
 Hannah N. Hamblin  
 Janet K. Hamilton  
 Ken Hamilton  
 Gary Hampe  
 Josh Hannes  
 David Hansen  
 Mary Hardin-Jones & David Jones  
 Ken Hardisty  
 Betty J. Harnden  
 Eric Harnsberger  
 Susan Harnsberger  
 Aaron Harper  
 Jessica A. Harper  
 Tim Harper  
 Candace Harris

Jake Harris  
 Cara Harshberger  
 Haselden Construction  
 Nick & Nicole Hauser  
 Jackie Hawks  
 HDR  
 Heggie Logging and Equipment Co.  
 Dane Hegland  
 Anna Helm  
 Karen J. Hepworth  
 Lindsay Herkstroeter  
 James Herrera  
 Dr. Samantha J. Herriott  
 Leilani Hesson  
 Robert Heward  
 Christina Hiegel  
 Jean A. Hildebrandt  
 Hilton Garden Inn Laramie  
 Doug L. Hixon  
 Shannon Hofferber  
 Holland & Hart, LLP  
 Dorothy Holloway  
 Austin Holmes  
 Patricia Hones  
 Dan Honick  
 Phil Howe  
 Robert R. Howell  
 Robert Huckvale  
 Kristi Hufty  
 Arlowe Hulett  
 Wanda Hulit  
 Kelly Humphrey  
 Samuel Hundley  
 Marc Hungerford  
 Carolyn E. Hurwitz  
 Angie Hyde  
 IMH Adminstration  
 IMH Board of Directors

IMH Business Office  
 IMH Cancer Center  
 IMH Dialysis & Cardio-Pulmonary  
 Departments  
 IMH Dietary  
 IMH Marketing  
 IMH Medical Records, Quality, and  
 Med Staff Services  
 IMH Patient Access Department  
 IMH Pharmacy Department  
 IMH Rehabilitation Department  
 Independent Heating & Sheet  
 Metal Inc.  
 Inspire Sleep  
 Interact Club  
 Jake & Kristy Isaak  
 Rhett Ivey  
 Ivinson Medical Group  
 J. Vasquez Construction  
 J's Prairie Rose  
 Diane Jackson  
 Jacoby Golf Course  
 Lydia Jaggard  
 Katelyn R. James  
 Ardell Jarratt  
 Adil F. Javaid  
 Farrukh Javaid  
 Jonnie Jenkins  
 Morris E. Jenkins  
 Tammy Jensen  
 Tim Jette  
 Michelle R. Johnson  
 Paul Johnson  
 William G. Johnson  
 Johnson Auto of Laramie  
 James A. Johnston  
 Jason Jones  
 Jeremy Jones

Leroy Jones  
 Dustin Joy  
 Valerie C. Joyce  
 Mary Kalinay  
 Scott Kamber  
 Brody Karhn  
 Opal J. Kelly  
 Jeanne & Keith Kennedy  
 Shelly Kentner  
 Connie Kercher  
 Jane Kercher  
 Tom Kern  
 Susan Kersey  
 Eldon Kieborz  
 Cheryl A. Kiefer  
 Sonya King  
 Emily Kingston  
 Cathy Kintner  
 Frances Kirby  
 Nicko Kleppinger  
 David J. Kling  
 Chris Knudsen  
 Nicholas Kolb  
 Ben Kordon  
 Steve Kramschuster  
 Noni Kersh  
 Kem & Janelle Krueger  
 Marilyn R. Krysl  
 Charlie J. Ksir  
 Kayla Kukowski  
 Raymond Kunselman  
 Wade LaCount  
 Kathryn LaGrange  
 Troy Laird  
 Eunice Lambert  
 Brittany H. Landry  
 Colleen Lang  
 Laramie Automotive & Diesel Repair

# DONORS, CON'T

Laramie Chamber Business Alliance  
 Laramie Dental Arts  
 Laramie Fire Department  
 Laramie GM Auto Center  
 Laramie Investment Co.  
 Laramie Jubilee Days  
 Laramie Land Company  
 Laramie Mechanical and Heating  
 Laramie Plains Federal Credit Union  
 Laramie Plains Lions Club  
 Laramie Police Department  
 Laramie Respiratory Service  
 Laramie Spinal Care Center  
 Ronald Leach  
 Ronald Leathers  
 Chad LeBeau  
 Gerland & Maxine Lebeau  
 Kizzy Ledesma  
 Jim Lee  
 Jessica J. Leinen  
 Carol Leis  
 Marcia Lenard  
 Jane K. Lentz-Gonzales  
 Jody Levin  
 Andrea Lewis  
 Brandon Lewis  
 LHS Volleyball  
 Jason & Linda Lillegraven  
 Oscar Lilley  
 Shirley Lilley  
 J.C. Link  
 James R. Littlewood  
 Cody L. Livingston  
 Roberta C. Lockard  
 Matt & Davina Lockhart  
 Nancy Lockwood  
 Denise Loose  
 Caroline J. Lopez

Taime S. Lopez  
 Lynn L. Lowrey  
 Ludwig Photography  
 Breann E. Lujan-Halcon  
 Luna Salon & Spa  
 Kevin Lundahl  
 James Lundquist  
 Ethan MacDougall  
 Lex Madden  
 Becky Maddox  
 Virginia Madesen  
 Jon A. Madsen  
 Teresa Mahaffey  
 Carl Majewski  
 Randi Majewski  
 Tom & Maleta Mangan  
 Donna Marburger  
 Heidi March  
 Mike Markle  
 Rob & Tina Marquardt  
 James E. Marquez  
 Chris Marr  
 Joe & Karen Marr  
 Amanda R. Martin  
 Jill M. Martin  
 Richard Martin Jr.  
 Martin/Martin Wyoming  
 Mary Lou Ellis/Ellis Ranch  
 Nicole Maxwell  
 Breann May  
 McAlister's Deli  
 Jacquelynn McCarty  
 Henrietta McCormick  
 Amanda R. McDougall  
 Lisa & Ray McElwee  
 Scott McFarland  
 Mike McGill  
 Andie McGlocklin

Jim McGrath  
 Gwynn McMillen  
 Annabelle McNamee  
 John R. McPherson  
 McWhinnie Trust  
 Medicine Bow Technologies  
 Medline Foundation  
 Sterling Meier  
 Richard Melone  
 Miguel Mendoza  
 Rebecca B. Merrill  
 Mindy Meuli  
 E. Gerald Meyer  
 Tom Michelena  
 Leslie Miech  
 Mike Peel (Certified Inspection Services)  
 Dr. Darren Mikesell  
 Dylan & Kelly Milam  
 Eileen & Mike Milam  
 David Miller  
 Donna Miller  
 Holly & David Miller  
 Nathan T. Miller  
 Rebecca Miller  
 Mingle's Lounge  
 Samantha J. Mizokami  
 Cathy & Mark Moen  
 Elsa Monaco  
 Mary F. Monteith  
 Carol Moore  
 Dalton Moore  
 Dean Moore  
 Dorothy Moore  
 Susan Moore  
 Tom Moore  
 Sarah A. Moran  
 Tamra L. Morgan  
 Terry Morgan

Dennis Morris  
 Cory & Terry Moss  
 Mountain Cement Company  
 Mountain West Farm Bureau  
 Denise Mullin  
 Rita Muniz  
 Nancy Munoz  
 National Christian Foundation  
 Gary & Kim Negich  
 Dave & Cheryl Nein  
 Marshall Nelms  
 Dan Nelson  
 Erica R. Nelson  
 Preston Nelson  
 Scott Newson  
 Nicholas & Tangeman, LLC  
 Bob Niemoller  
 Jim & Kristine Ninneman  
 Calvin & Sherrie Niss  
 Kayla L. Nollen  
 Northridge Discount Liquors  
 Joey Nunley  
 Pete Gosar & Devon O'Connell  
 Mary O'Flannigan  
 Bob O'Brien  
 Fred J. Ockers, Jr.  
 Stephanie A. Oland  
 Old Elk Ranch  
 Charles & Elinor Olsen  
 Ivan Olson  
 Becky K. Ontiveroz  
 Linda G. Osterman  
 Shelby R. Page  
 Steve Page  
 Lisa W. Painter  
 Alice Paintin  
 Mark W. Pajak  
 Palatium Hair Studio



# DONORS, CON'T

Karen Panter  
Levi Pantier  
Caitlin Parks  
Andrew Parsekian  
Partner Services at Ivinson  
Dan & Delilah Pasman  
Eric Paul  
Daniel Peel  
Pence and MacMillan, LLC  
Danielle & Lonnie Penner  
Craig Perkins  
Nickolette Perschino  
Pete Lien & Sons  
Helen Peters  
Matthew Peters  
David J. Petersen  
Jen & Lars Peterson  
Rolf Peterson  
Robert & Barbara Pier  
Deborah Pimentel  
Odie Pino  
Jonathan S. Pischel  
Candace Piscioti  
Nancy Platt  
Lucas & Shannon Plumb  
Pole Mountain Pharmacy  
Shannon Polk  
Poppy's  
Joan Porter  
Virginia Porter  
Mary-Catherine Prehoda  
Premier Bone & Joint Centers  
Delaney J. Prince  
Amanda M. PUNCHES  
Patrick Purcell  
Purple Hippo, LLC  
John Purviance, MD  
Qdoba Mexican Grill

Quality IV Care  
Patricia Radosevich  
Barbara Ramlo  
Katherine R. Ratigan  
Rawstone Development  
Chelsea Raymer  
Ann F. Rebka  
Arienna Reher  
Charles Reher  
Patsy Reihl  
Dylan Ren  
Cal & Janice Rerucha  
Bret Reynolds  
Ken Reynolds  
Kymberly Riddle  
Lidia Ridley  
Grace Riedesel  
Connie Riesland  
Robin Riesland  
John Rindler  
Betty J. Ritter  
Riverstone Bank, Laramie Branch  
RML & Associates CPAs  
Terry & Beverly Roark  
Clark Robbins  
Tracy A. Roberson  
Charleigh Roberts  
Kurt Roberts  
Lois Roberts  
Raymond & Bonnie Robertson  
Rocky Mountain State Society of AMT  
Mike & Cheryl Rodgers  
Diana Roising  
Sheridan Roling  
Richard Romero  
Tammy Rompola  
Nicole Rooney  
Megan V. Rossi

Roger Rottman  
John H. Rowland  
Rowland Associates  
Sherrie Rubio-Wallace  
Erin Rumsey  
James Sammon  
Melissa Samp  
Beth Fly  
Jessica Sanchez  
Emily P. Sanders  
Angela Sanford  
Karen Saunders  
Lawrence Saunders  
Penny Saunders  
Mike J. Scandalios  
Cameron Schaefer  
Jay D. & Claire Schaefer  
Cindy Schaffers  
Halle Schaneman  
Tony Schaneman  
Marie Scheaffer  
Alan & Roberta Schimek  
Michael Schluck  
Alice Schnitker  
Linda Schnitker  
Geneva Schueler  
Joshua & Katlyn Schultz  
Megan Schwantes  
Vernon Scott  
John & Jenna Scozzafava  
Chris Seago  
Security First Bank  
George D. Semenov  
Andrea Senior  
Carl Shaffer  
Sherry Shaffer  
Denton Shaw  
Mary Shaw

Marie Sheaffer  
Shawn Sheen  
Timothy Shoales  
Roxann Shumaker  
Janice Shuster  
William Silvrants  
Vincent Siren  
Randal & Pepper Six  
Dawn D. Skinner  
Peter Skorcz  
Geri Skuhr  
James J. Slater  
Joseph Slattery  
Amy Smith  
Donald A. Smith  
Grady Smith  
Sherrill Smith  
Snowy Range Ski Area  
Snowy Range Vision Center  
Abigail Soddy  
Joan Smith Sonneborn  
Sorooptimist International of Laramie  
Joe Southards  
Lowell K. Spackman  
Brandon & Marilyn Specht  
Brianna Specht  
Spiegelberg Family  
Spine & Injury Clinic of Laramie  
Germaine St. John  
James Stafford  
StagePoint Federal Credit Union  
Tim Stamp  
Tracy Starkey  
Joe & Sue Steiner  
Robert Stine  
Mollie Stinson  
Gloria Stoddard, FNP  
Stone Meadow Health & Wellness

# DONORS, CON'T

Stonehouse  
Janelle Story  
Ivy Strong  
Lynn Stubbs  
Studio R.E.D.  
Stutzman Construction  
Sugar Mouse Cupcake House  
Jeff Suloff  
Sweet Pickles  
Donald & Bonnie Swiatek  
Synergy Systems, LLC  
Kyle Tallent  
Grace Taylor  
Kimberly Taylor  
Matthew Taylor  
Michela Telford  
Jack & Jenna Tennant  
Amy Terrell  
Tracy Terrell  
Trevor Thatcher  
Galand Thaxton  
Thaxton Insurance Agency  
The Alibi  
The Alice Shaffer Living Trust  
The Brown 'N Gold Outlet  
The Butcher Block, LLC  
The Church of Jesus Christ of  
Latter-day Saints  
The Family Trust of Conrad J. Kercher  
The Mortgage Source Inc.  
The SLAM Collaborative, Inc.  
The Still Package Liquors  
Kelly J. Thom  
Donna & Tanya Thompson  
Duane & Marcy Toro  
Nadia M. Torok  
Erich Toth  
Tough Guys

Michael Tremel  
Trihydro Corporation  
Fred Turner  
Keara Turner  
Michele Turner  
Turning Leaf Realty  
Two Mountain Construction  
Two Mountain Taxidermy  
Jan Twyford  
UBS Institutional Consulting Group  
UHealth  
Dr. Eric J. Uhlman  
Dr. John Ullrich  
Undercover Bed and Spas  
UniWyo Credit Union  
UW Art Museum  
UW Athletics Dept. Cowboy Joe  
UW College of Health Sciences  
UW Cross Country  
UW President's Office  
Nathan Valencia Still  
Aaron Van Buren  
Bryan and Stefanie Van Buren  
Josh Van Dyck  
Ron A. Van Ekeren  
John Vandel  
Nicole Vasquez  
Alan Ver Ploeg  
Kim D. Viner  
Joe Vitale  
Voltech Electric  
Linda Waggener  
Paulette Wagner  
Brad Waldbauer  
Walgren Dental Arts, PC  
Christel B. Walrath  
David E. Walrath  
J.T. Walsh

William Waneka  
William T. Ward  
Guy Warpness  
Shadow Warpness  
James & Sueann Wasmuth  
Denali Water  
Fred C. Waters  
Ferne Watson  
Amy Weaver  
Anne Weddle  
Weifield Electrical Contracting  
Randy Weigel  
Randy Welniak  
William R. Werner, Jr.  
Tom & Lora Wesche  
Jerald & Debora Wessels  
West Laramie Fly Store  
Dr. Kim & Shay Westbrook  
Western States Bank  
Western States Fire Protection  
Western Water Works  
Laura Lea Westlake  
CJ Wheeler  
James & Sagan Wheeler  
Tanya Wheeler  
Gillian F. White  
Phyllis Whitmire  
Pamela Wickkiser  
Jo Linda Wiedmeier  
Tom Wilhelm  
Katherine S. Wilkins  
William and Glenda  
Schmidt Living Trust  
Mary Williams  
Maxine Williams  
Brooke Willis  
Tyler Willis  
Flewellyn & William Wilson

Hannah Wilson  
Deborah Wiltse  
Jessica Winchell  
Kelsey J. Wine  
Thomas R. Witkop  
Seth Wittke  
Deryl & Susan Woirhaye  
Ted M. Wojtysiak  
Cameron H. Wright  
Erica Wright  
Marcella Wright  
Paul Wright  
Travis Wroblewski  
WY Society for Clinical Lab  
Science  
Spencer M. Wyant  
Wyoming Bank and Trust  
Wyoming Hospital Association  
Wyoming Mechanical  
Maintenance, LLC  
Wyoming Oncology  
Professionals, LLC  
Wyoming Secretary of State  
Wyoming Sports Properties  
Wyoming Wood Stove  
WyoTech  
Beth Young  
Dr. Burk Young  
Holly Zajic  
Melissa Zeglen  
Mel Zenoni

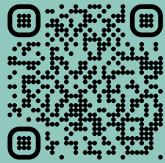
*Many thanks*

**TO OUR DONORS;  
WE ARE GRATEFUL  
FOR YOUR SUPPORT**



# WAYS TO GIVE

## ONLINE



Make a payment using  
our secure server at  
[imhfoundation.org/donate](https://imhfoundation.org/donate).

---

## PHONE

Call the IMH Foundation during normal  
business hours at (307) 755-4520.

---

## MAIL

Send payment to:  
IMH Foundation  
255 N 30th St.  
Laramie, WY 82072

*Your gift is tax deductible as provided by law.*

*Thank  
You!*